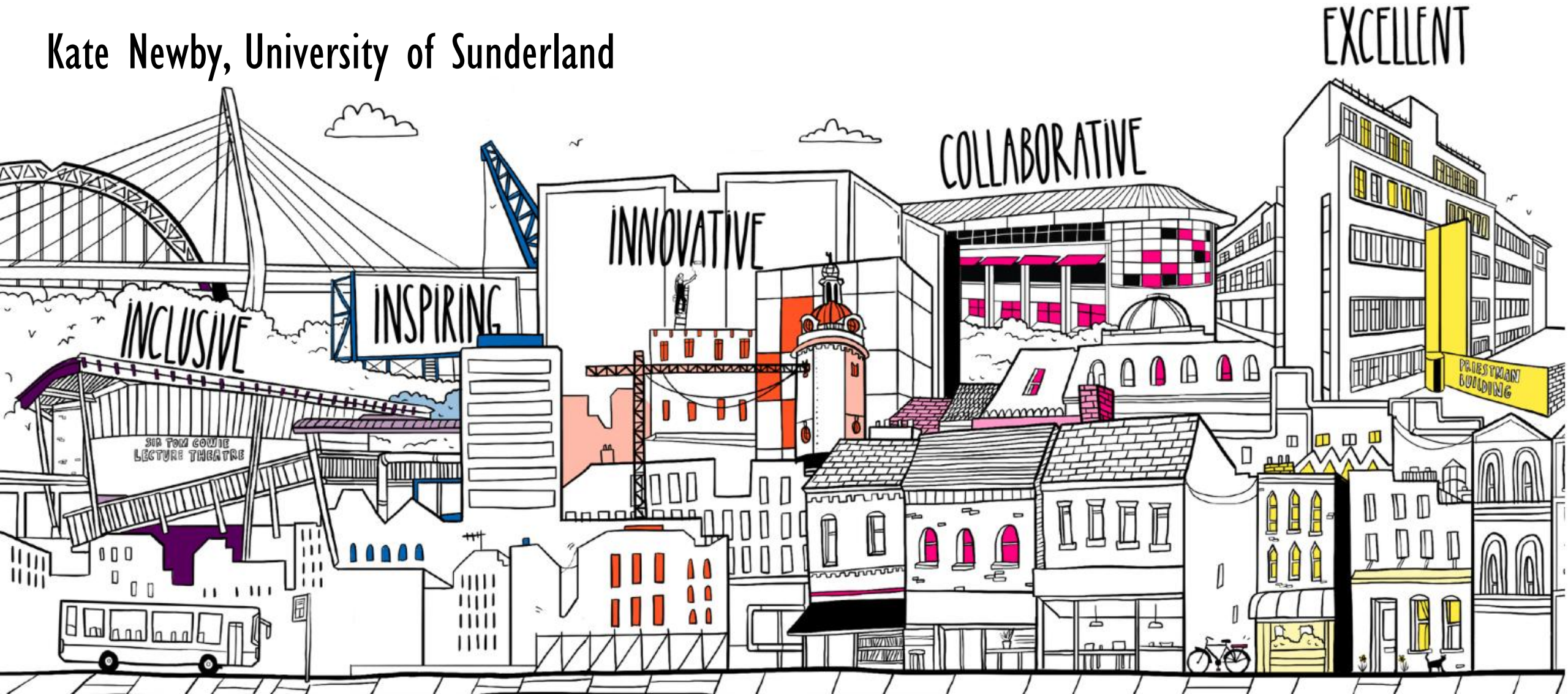


# RETENTION DEEP DIVE: Creating the conditions for success

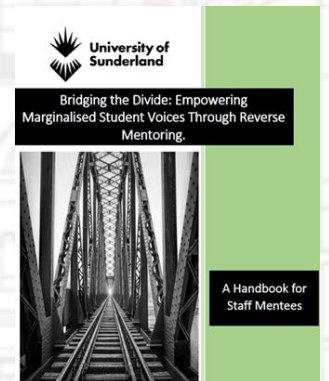
Kate Newby, University of Sunderland



# MY ROLE AT SUNDERLAND

## Faculty Academic Support Lead: School of Nursing & Health Sciences

- Cross-institutional Collaborative Retention Initiatives
- Nursing & Health Strategic Retention Initiatives
- Personal Academic Tutoring
- Predictive Analytics for Student Retention
- Chair of Student Voice Feedback Forums
- Data Driven approaches
- Retention & Student Success focused projects



Academic year	Withdrawals (%)
2021/22	14.2
22/23	8.5
23/24	5.5
Current	3.6

# STUDENT VOICE INSIGHTS

## Social Isolation and Peer Support (Belonging)



- Social Isolation and Peer Support
- Imposter Syndrome and Identity Challenges
- Need for re-induction at different points

## Health, Disabilities & Accessibility



- Institutional policies and exclusionary classroom practices.
- Well-being and Mental Health/ complex external pressures and trauma.

## Educational & Administrative Barriers



- Adjusting to Academic Expectations
- Clarity and Consistency in Academic Resources and AI Use
- Feedback and Marking Consistency

## Balancing Multiple Roles & Responsibilities



- Financial Pressures
- Caregiving and Family Commitments
- Scheduling, timetabling and Placement Issues



# EMPOWERING STUDENT ACHIEVEMENT

## **Health Education England funded project :**

- Using Predictive Analytics Dashboard (PAD) to target most at risk students
- Identify barriers and challenges
- Targeted support
- Explore solutions, evaluate and share good practice
- Feedback qualitative insights into PAD

# THREE MOST CHALLENGING AREAS



Challenges with  
academic skills



Assessment and  
feedback



Experiences of Leave of  
Absence

We then targeted these three areas with interventions...

# CREATING THE CONDITIONS FOR SUCCESS: IMPACT



## Retention

Percentage pass at all stages of the programmes has increased by between **4.8 - 6%**



## Attainment

Average module marks have increased by **up to 15%** in some areas.



## Outcomes for Students with a Disability

**7.7% increase** in average mark and **23.1% increase** in overall students passing.



## First Time Pass

In one module there was a **15% uplift** in first time pass rates and **5% uplift** in attainment in submissions compared to previous year.



# THANK YOU

