



**University of
Sunderland**

Ling, Manny (2013) "Inscapes of Beauty" (from 'Their Colours and their Forms' exhibition). [Show/Exhibition]

Downloaded from: <http://sure.sunderland.ac.uk/id/eprint/3903/>

Usage guidelines

Please refer to the usage guidelines at <http://sure.sunderland.ac.uk/policies.html> or alternatively contact sure@sunderland.ac.uk.

MANNY LING — REF OUTPUT ONE

'Inscapes of Beauty' — work from the 'Their Colours and Their Forms' exhibition at the Wordsworth Museum

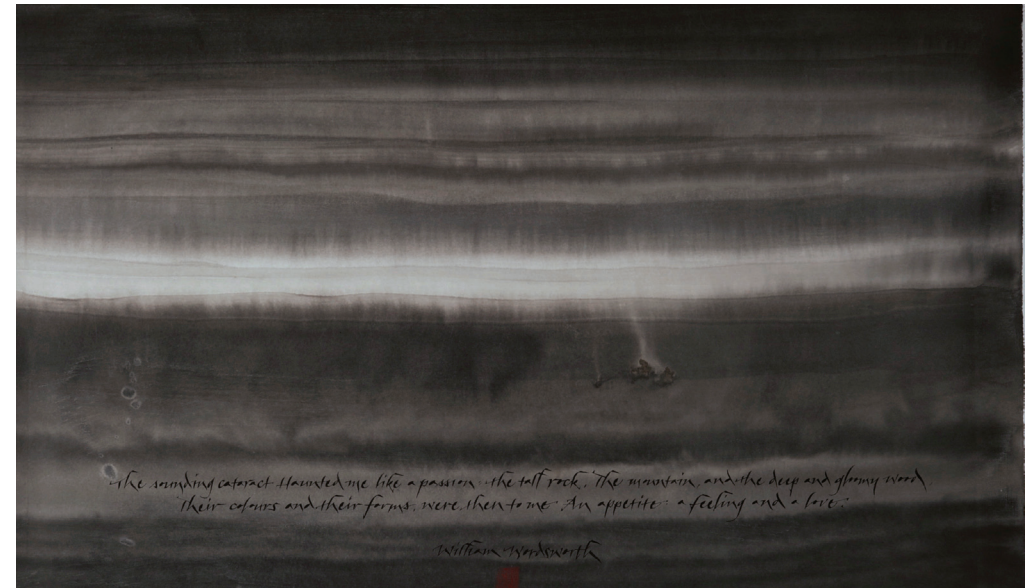


'Derwent'

Words by Poet John Strachan

Calligraphy and Painting by Manny Ling.

Chinese ink on Xuan paper, stretched over Fabriano 5

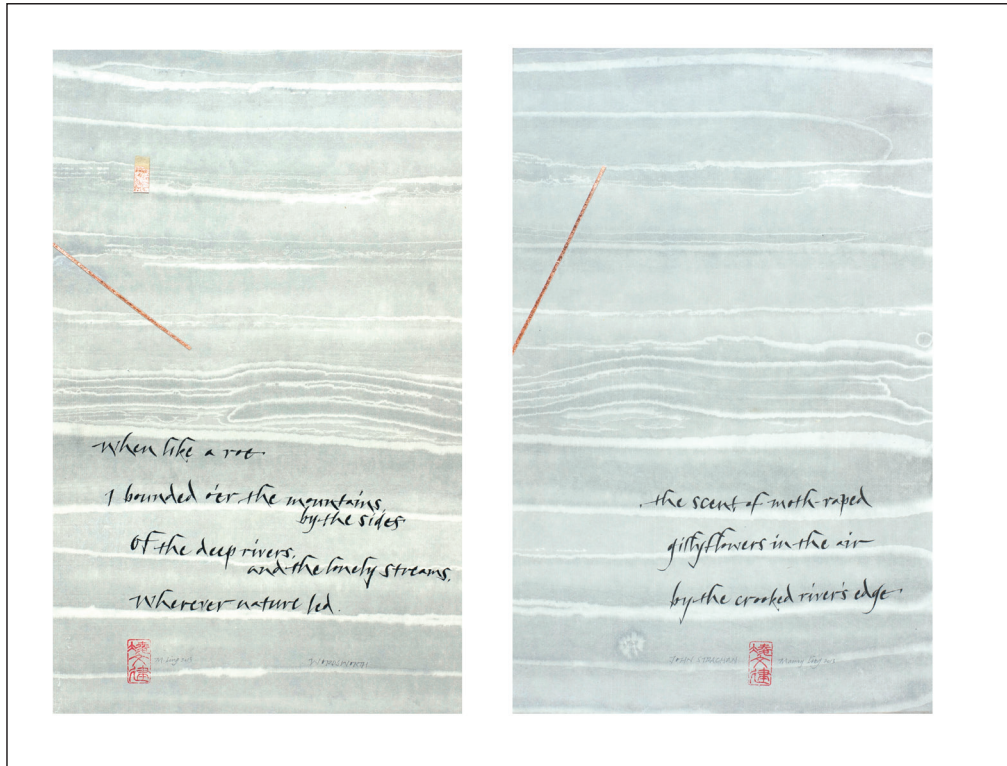


'Tintern Abbey'

Words by Poet William Wordsworth

Calligraphy and Painting by Manny Ling.

Chinese ink on Xuan paper, stretched over Fabriano 5

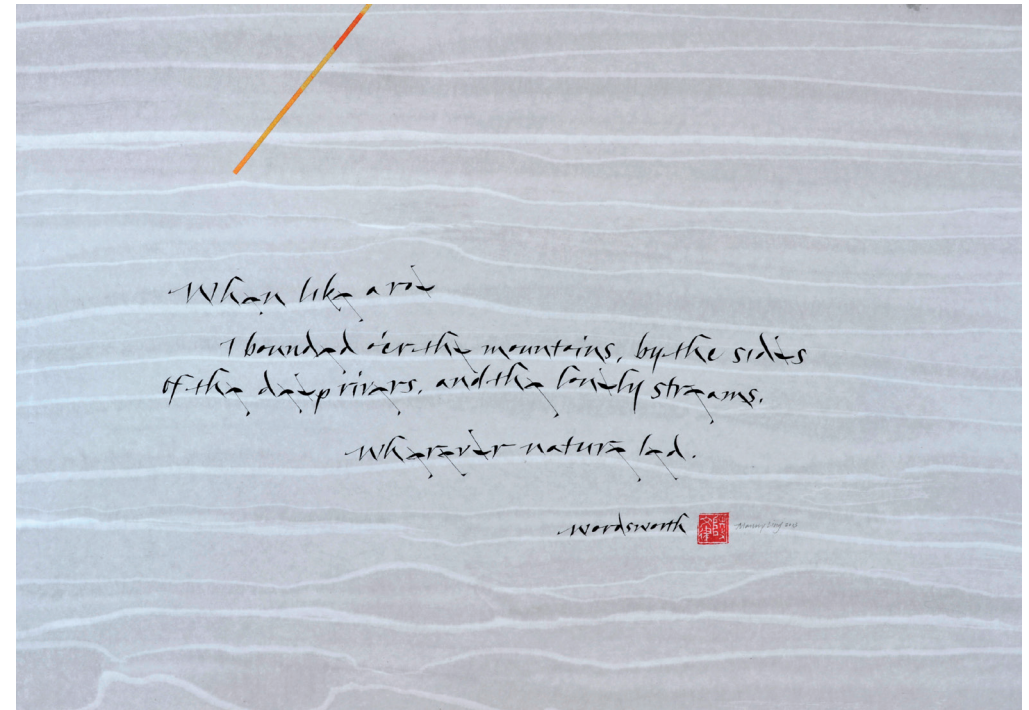


'Parallel Connections'

Words by Poets John Strachan & William Wordsworth

Calligraphy and Painting by Manny Ling.

Chinese ink on Xuan paper, stretched over Fabriano 5. Metal Leaf.

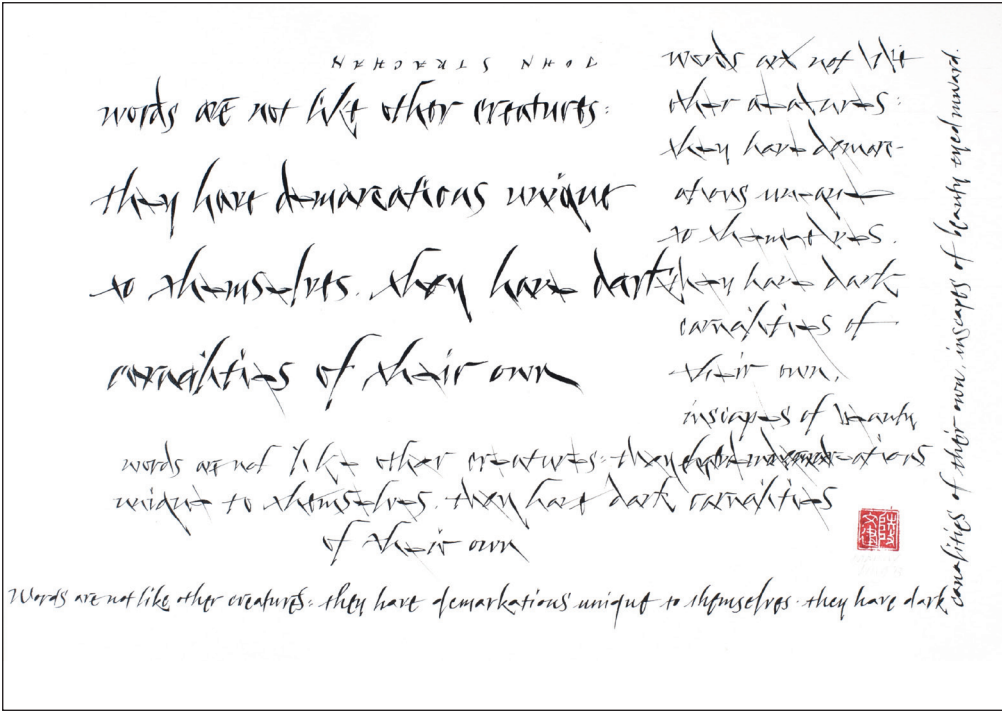


'Tintern Abbey 2'

Words by Poet William Wordsworth

Calligraphy and Painting by Manny Ling

Chinese ink on Xuan paper, stretched over Fabriano 5 and Metal Leaf

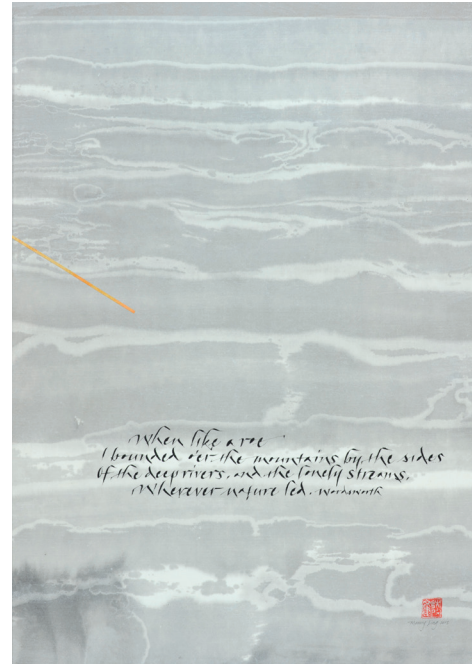


'Untitled'

Words by Poet, John Strachan

Calligraphy by Manny Ling

Chinese ink on Fabriano 5

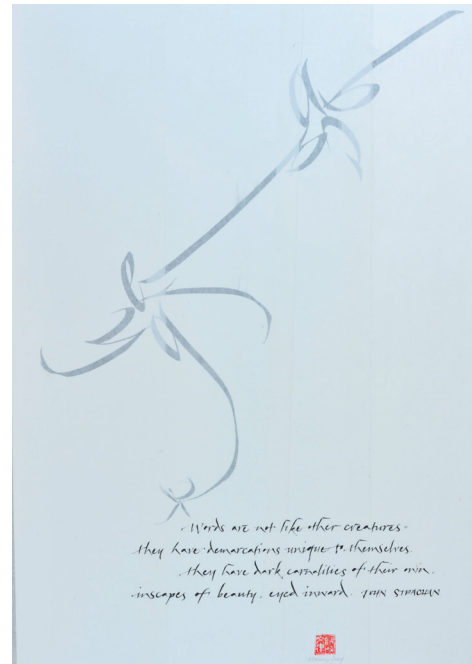


'Tintern Abbey 3'

Words by Poet, William Wordsworth

Calligraphy and Painting by Manny Ling

Chinese ink on Xuan paper, stretched over Fabriano 5 and Metal Leaf



'Untitled 2'

Words by Poet, John Strachan

Calligraphy by Manny Ling

Chinese ink on Xuan paper, stretched over Fabriano 5