

Research Relevance and Impact: Where's the Evidence?



Overview

- Generating Impact
- Emergence of Evidence-Based Paradigm
- The Evidence-Based Practice/Research
- Evidence-Based Paradigm in IS
- Importance of Systematic Reviews (Secondary Studies)
- Importance of Empirical Primary Studies
- Delivering Impact
- Research Relevance and Impact
- Follow-Up Bibliography.





Generating Impact

- For information systems research to have an impact it needs to be able to help practitioners make decisions and draw on evidence to answer questions that matter to them. Such as
 - What are the pitfalls to avoid when implementing a customer relationship management system for my type of organisation?
 - In what circumstances are MOOCs more effective than traditional teaching?
 - When is pair programming more productive than individual programming?
 - Are there common failure patterns in public sector projects?

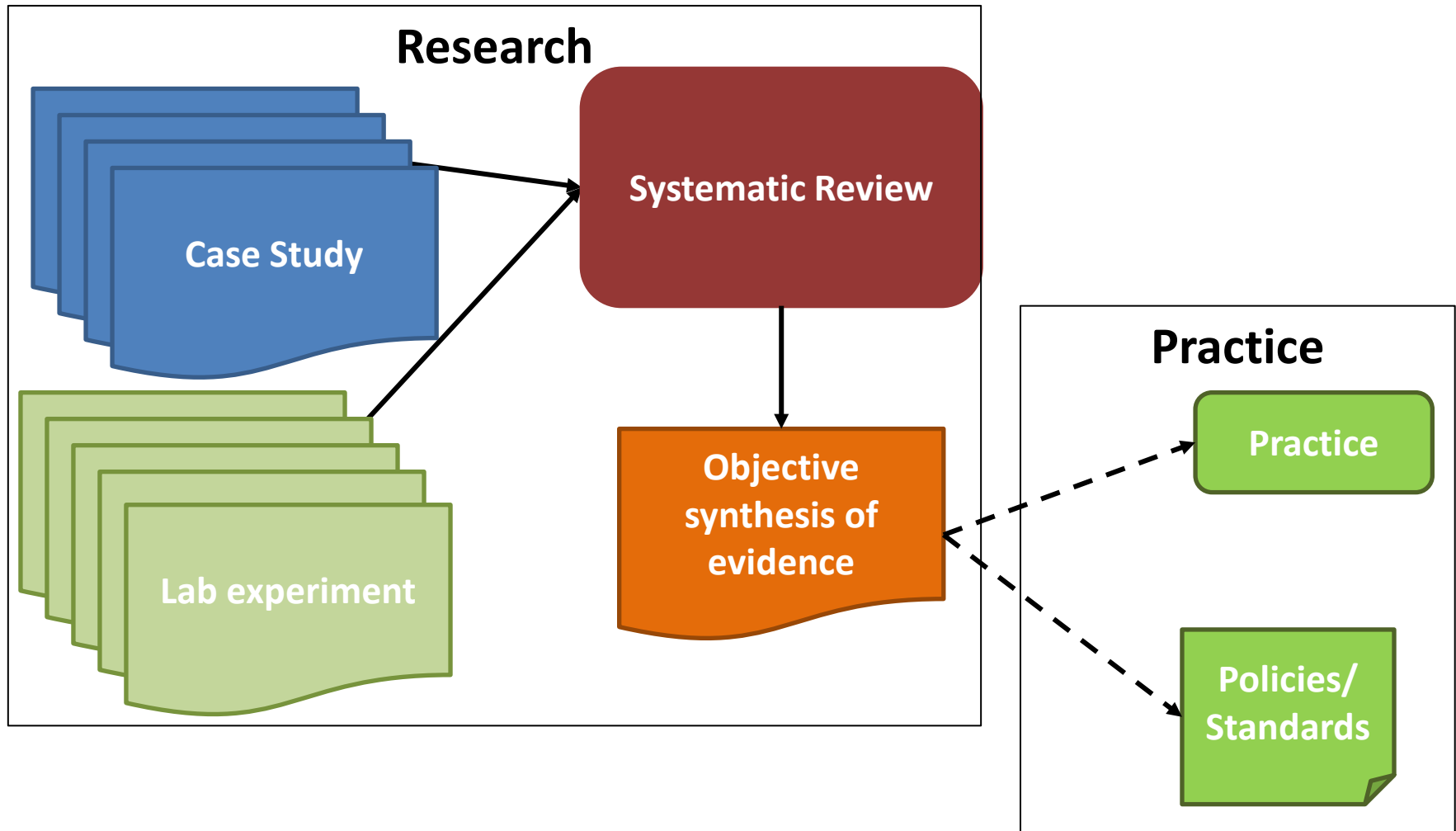


Generating Impact

- For information systems research to have an impact it needs to be
 - rigorously undertaken,
 - clearly reported,
 - built upon by researchers, and
 - applied in practice.
- The Evidence-Based Paradigm provides a structure in which to do this.



Evidence Based Paradigm

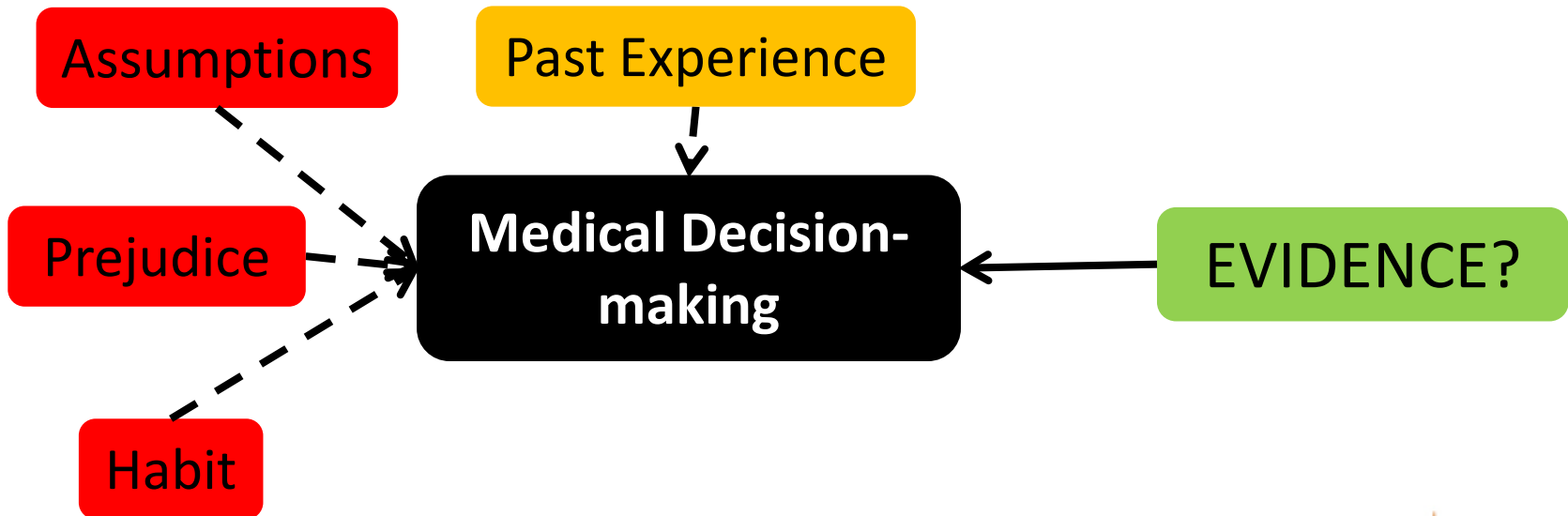


Based on Kitchenham et al. (2015)

Inaugural Research Conference: Intel College, Nairobi, November 2015

Emergence of Evidence-Based Practice

- In 1990s Evidence-Based Medicine emerged.
 - e.g. Sackett et al (1996).
- Responding to concerns about idiosyncratic practitioner decision-making
 - Often lacked knowledge of relevant, up to date, research

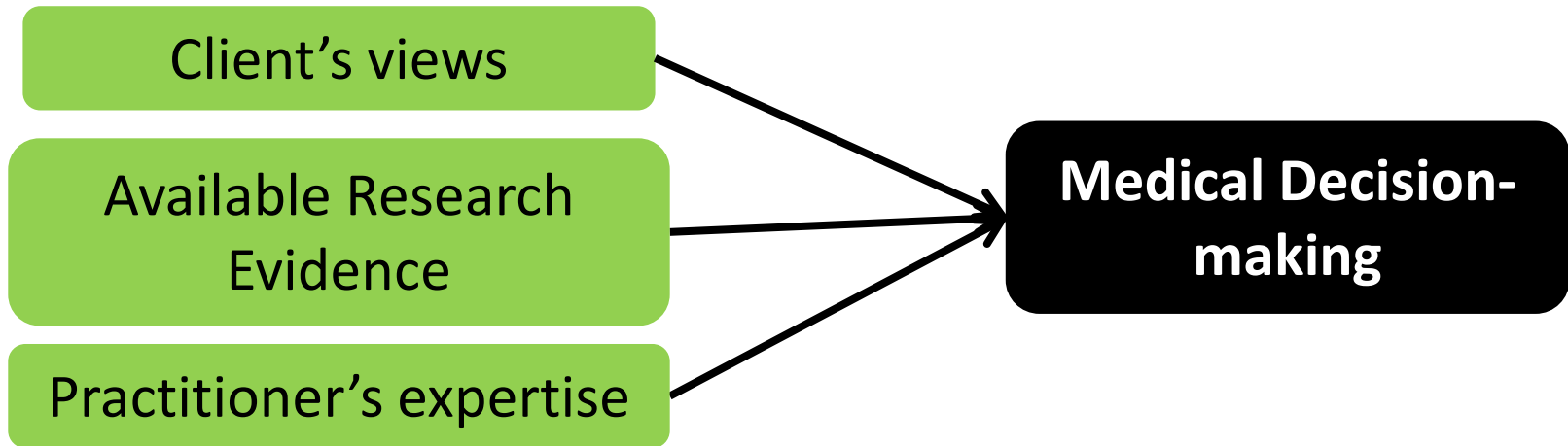




Emergence of Evidence-Based Practice

EBM:

- Uses the best available research evidence
 - research must be conducted using a sound methodology
- Uses practitioner's expertise
- Includes client's views





Evidence-Based Practice/Research

- Evidence-Based Practice adopted in other fields:
 - Education, Librarianship, Nursing, Policing, Social policy
 - More recently in Software Engineering
 - championed in UK by Brereton, Budgen, Kitchenham.
 - championed in Scandinavia by Cruzes, Dybå, Jørgensen.
- Evidence-Based Research being called for and discussed in:
 - Information Systems
 - Initially by Atkins, Louw, Moody, Baskerville, Myers,
 - Childs, Edwards, Oates, Wainwright: seeking to develop a EBP community via EBIS journal

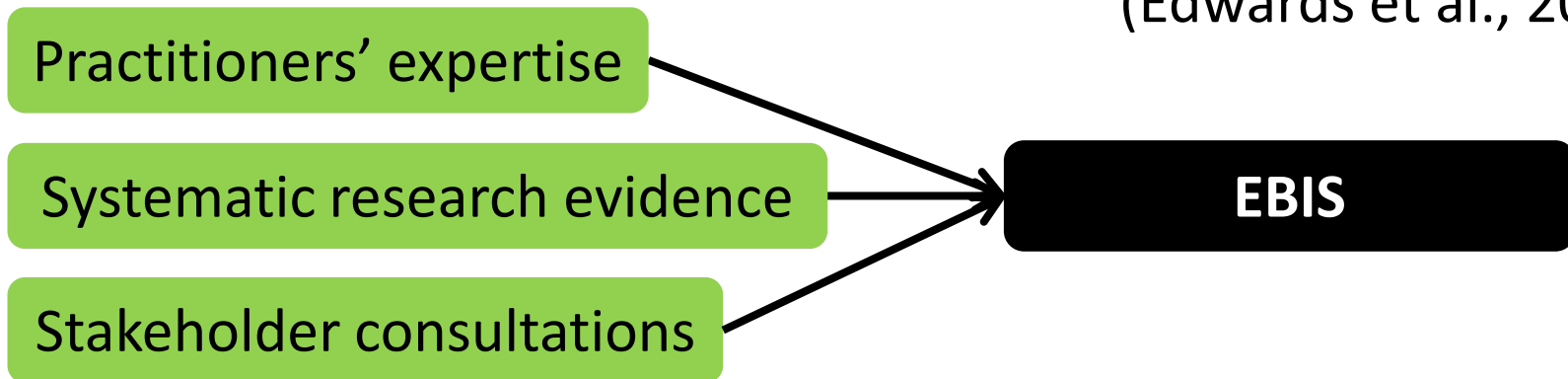


The Evidence-Based Paradigm in IS

We define evidence based information systems (EBIS) as

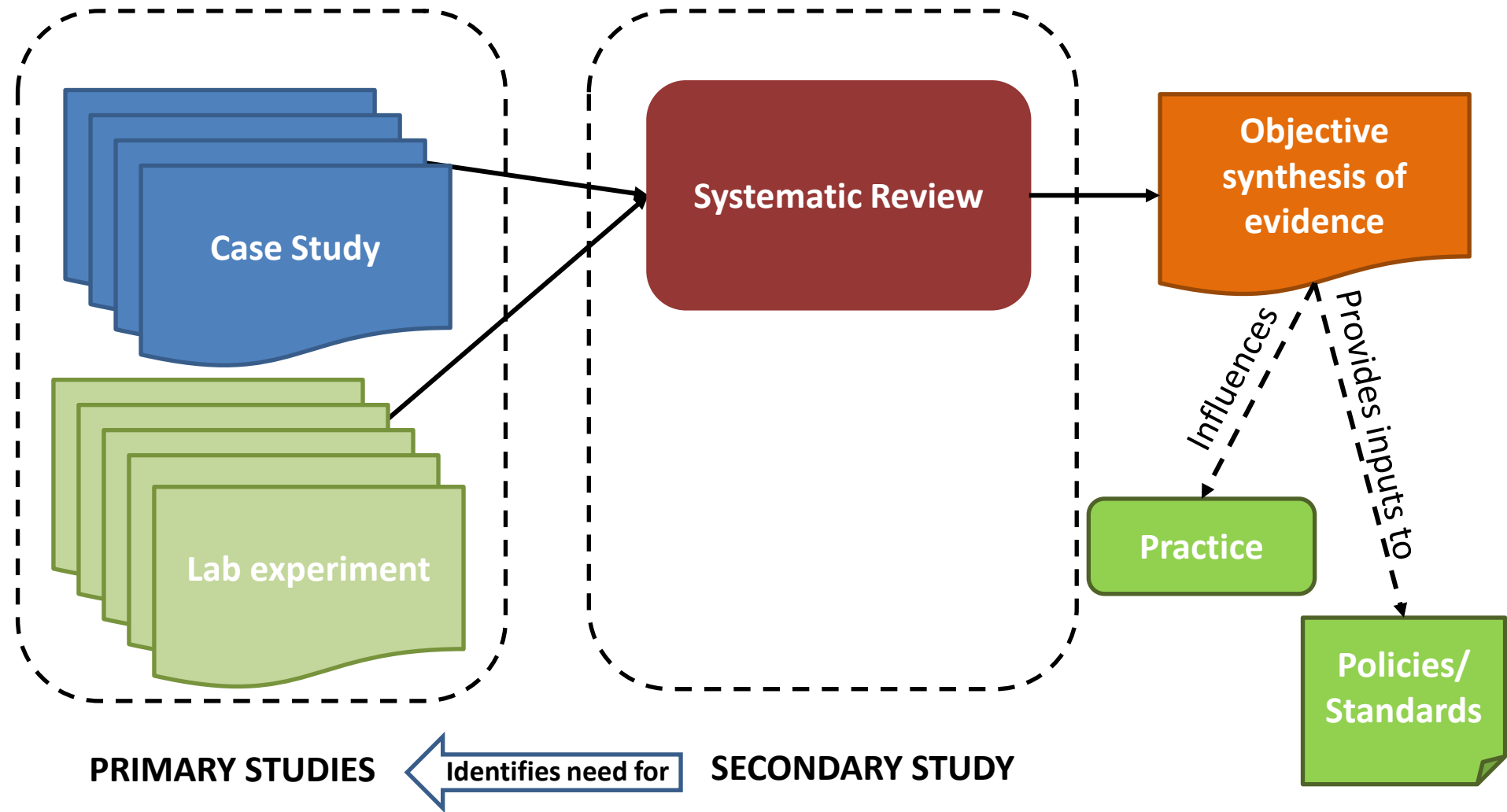
- *“an approach to decision-making in the design, adoption and implementation of information systems*
- *that uses the best evidence available, from both practitioner expertise and systematic research,*
- *in consultation with all stakeholders”*

(Edwards et al., 2014).



To achieve this we need data-rich research and its synthesis

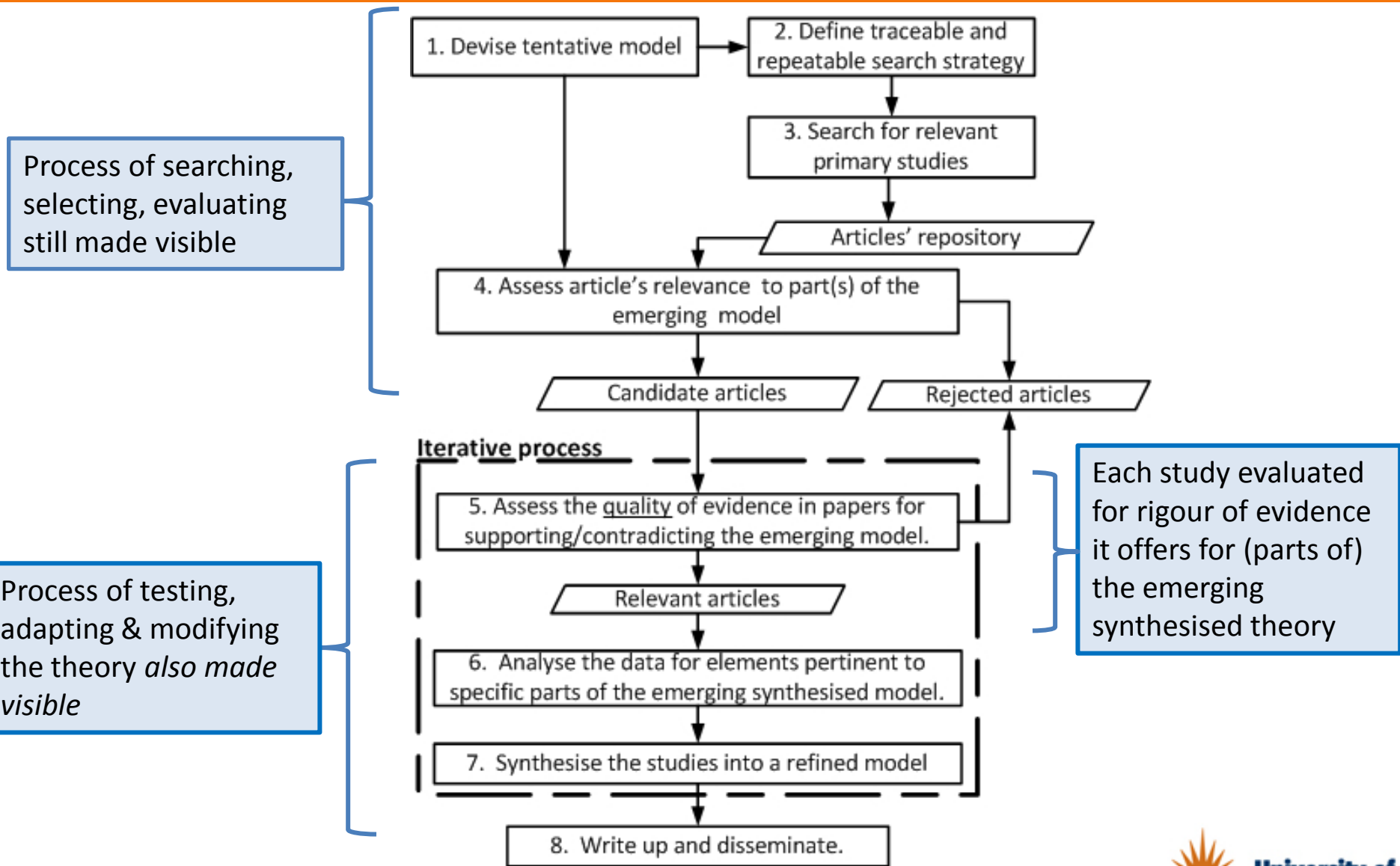
Importance of Systematic Reviews (Secondary Studies)



Based on Kitchenham et al. (2015)

Inaugural Research Conference: Intel College, Nairobi, November 2015

Systematic Review: One Option - a Model-Driven SLR Process



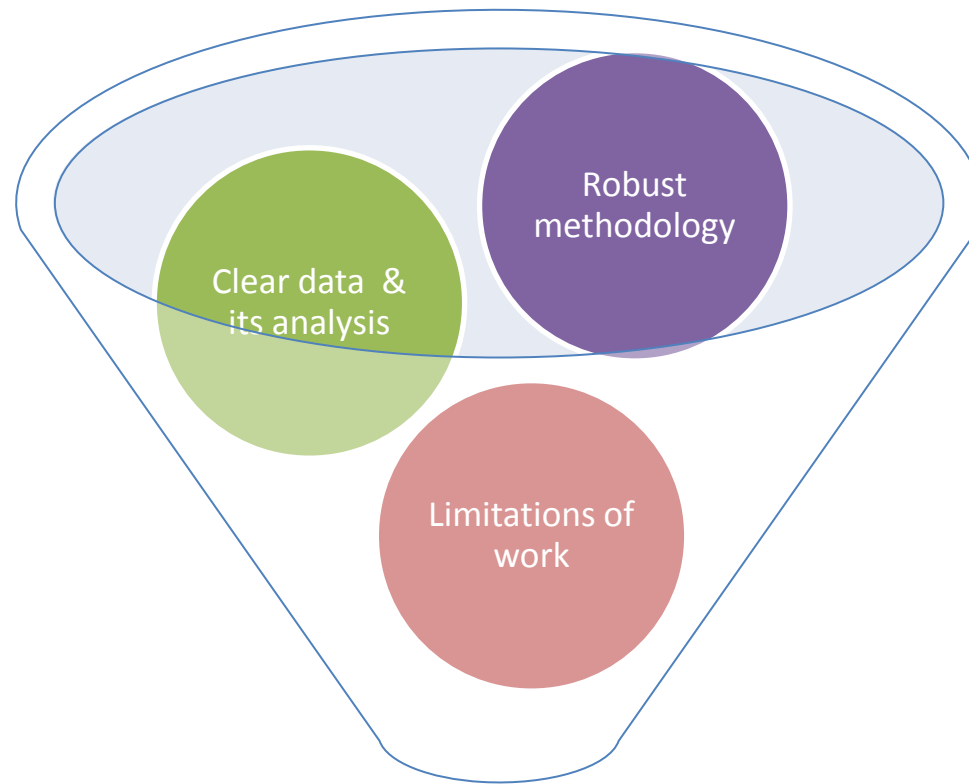
Comparison: Traditional v. MD SLRs

Traditional SLR	MD-SLR
Evidence: series of experiments	Evidence: set of case studies
Summative decision	Richer understanding
Prescriptive	Informative
Linear process	Iterative process
Suited to cause-effect research	Suited to complex situations
Suited to quantitative, positivist research	Suited to qualitative, interpretive research





Importance of Empirical Primary Studies



Stand alone results/

High quality inputs to Systematic Reviews



Example

Empirical Data about BPMN in Use



Paper	Found in:
Auer et al, 2009	CSDL
Bastide et al, 2010	Inspec
Bhuiyan and Krishna, 2010	AISeL
de la Vara and Sanchez, 2009	Inspec
de la Vara et al, 2008	Inspec
Green et al, 2005	AISeL
Hernandez et al, 2010	Inspec
Hinge et al, 2010	Inspec
Linna et al, 2009	IEEE Xplore, inspec
Overhage and Birkmeier, 2009	AISeL
Patig and Casanova-Brito, 2011	AISeL
Recker and Dreiling, 2011	AISeL
Recker et al, 2006	AISeL
Recker et al, 2010	Business Source Elite, ingenta
Recker, 2010	Inspec, ingentaconnect, Emerald
Siegeris and Grasl, 2008	Inspec
Simmonds and Collins, 2010	AISeL
Svagård and Farshchian, 2009	Inspec
Zhu et al, 2008	Inspec
zur Muehlen and Ho 2008	IEEE Xplore, inspec, CSDL

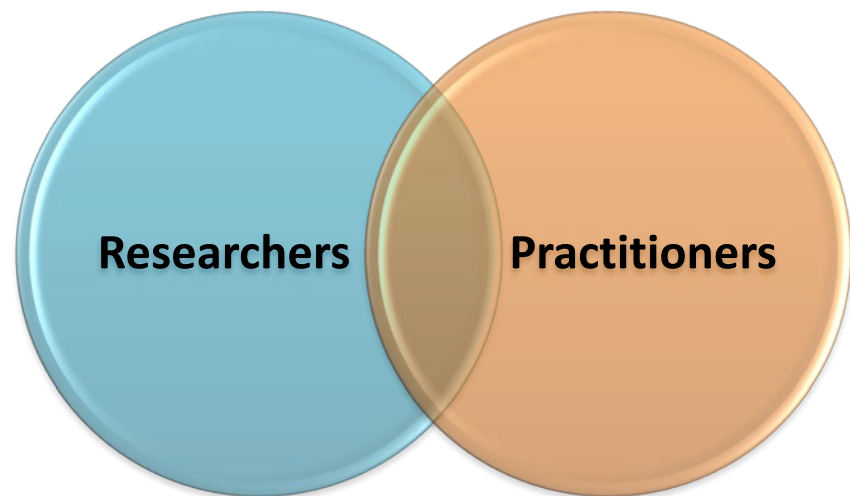
From (Oates et al., 2012)





Delivering Impact

- An evidence-based information systems (EBIS) community needs to be established
 - to do the primary and secondary research
 - to use findings to inform practice
 - to use practitioners' experience to feedback into research
- ... this needs to be a collaborative activity
 - to deliver impact.



Research Relevance and Impact

Where's the Evidence?

- Shared in accessible research publications?
- Shared with practitioners via other media?

Or

- Buried in journals/conference proceedings?
- Hidden in inaccessible technical reports?
- Restricted to individuals' experiences?

The challenge to you:

- Do meaningful empirical work .
- Synthesise primary studies to reveal “hidden knowledge”.
- Write rigorous but accessible articles for varied audiences and publication media.



Follow-up Bibliography

- Atkins, C. and Louw, G. (2000). Reclaiming Knowledge: A Case for Evidence Based Information Systems, in *Proceedings of European Conference on Information Systems 2000*.
- Edwards, H., Childs, S., Oates, B. and Wainwright, D. (2014) Yet another journal! – Is there any need?, *Evidence Based Information Systems Journal*, 1(1), 7.
- Kitchenham, B., Budgen, D. And Brereton, P (2015) *Evidence-Based Software Engineering and Systematic Reviews*, Chapman and Hall/CRC , London.
- Montori, V.M. and Guyatt, G.H. (2008). Progress in evidence-based medicine. *Journal of the American Medical Association*, 300 (15), 1814-1816.
- Grover, V. and Lyytinen, K . (2015) New State of Play in Information Systems Research: The Push to the Edges, *MIS Quarterly*, 39(2), 271-296
- Moody, D.L. (2003). Using the World Wide Web to Connect Research and Professional Practice: Towards Evidence-Based Practice. *Informing Science*, 6, 31-48.
- Oates, B. J. (2015) On systematic reviews for evidence-based practice (Commentary). *J Inf technol*, 30(2), 177-179.
- Oates, B.J, Edwards, H.M and Wainwright, D. (2012). A Model-Driven Method for the Systematic Literature Review of Qualitative Empirical Research. *International Conference in Information Systems (ICIS2012)*
- Pawson, R. (2006). *Evidence-based policy. A realist perspective*. Sage, London.
- Sackett, D. L., Rosenberg, W., Gray, J., Haynes, R. B., & Richardson, W. S. (1996). Evidence based medicine: what it is and what it isn't. *BMJ*, 312(7023), 71-72.

